



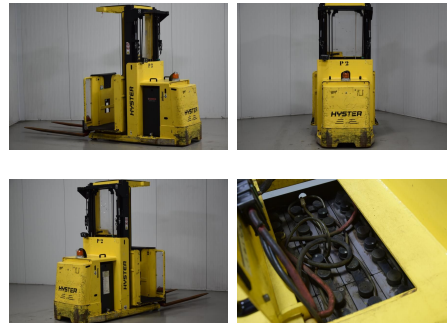
M.T.C. (Moerdijk Trading Center) B.V.  
Apolloweg 11  
4782 SB Moerdijk  
Harbour 196  
The Netherlands  
T +31 (0) 168 382 602  
F +31 (0) 168 382 604  
info@mtc-forklifts.com  
www.mtc-forklifts.com

## Hyster K1.0H

**Capacity:** 1000 kg  
**Mast type:** Duplex  
**Lift height:** 3720 mm  
**Closed height:** 2340 mm  
**YOM:** 2008  
**Running hours:** 10510  
**Engine type:** Electric  
**Tech. Condition:** average  
**Visual condition:** average  
**Fork length:** 1200 mm

**Com Nr.:** DR25  
**Front tyres:** Polyurethane  
**Rear tyres:** Polyurethane  
**Battery:** 2008, 24V, 620Ah,

### Extras:



**Price: on request** (Subject to prior sale)